

ExonomTM

COMBI BOILERS SINCE 1939
FLEXIBLE PELLET /WOOD BOILER



Exonorm P20 UB



THE PELLET BOILER FOR ENVIRONMENTAL HEAT

Exonorm P20 UB is an excellent boiler for combining with a modern pellet burner. Exonorm P20 UB is designed with large convection surfaces to give optimal efficiency ratio. By adjustment of the two dampers the convection surface area can be chosen. Thereby changing the smoke gas temperature in the smoke gas pipe and the boiler's efficiency ratio. The dampers can also be used to simplify initial ignition in wood fire, where in step two go over to under combustion to achieve a good efficiency ratio even with wood burning.

Exonorm P20 UB is optimized for pellet combustion and does not have as high efficiency ratio and environment values with wood burning as our wood burning boilers of the Keram series.

Exonorm P20 UB is designed for connection to an accumulator tank. Read more in the brochure on the Euronorm accumulator tank ExoTank.

CONNECTION BETWEEN BOILER AND ACCUMULATOR TANK

The Euronorm pump connection kit is well-proven for connecting boilers with accumulator tanks. The connection kit is designed so that the return water to the boiler always has the correct temperature. This guarantees that condensation, which reduces the life length of the boiler, is avoided,



Exonorm P20 UB, with doors equipped with mounting plates, for installation of pellet burner, forward alternatively upward burning.

CONVENIENT AND SAFE HEAT FOR A REASONABLE PRICE



Exonom P20 UB. Doors with mounting plates for pellet burner, ceramic insulation on the inside, grate (removed for pellet and oil burning), wood burning grate and ash box.

OPTIMIZE YOUR EXONOM SYSTEM

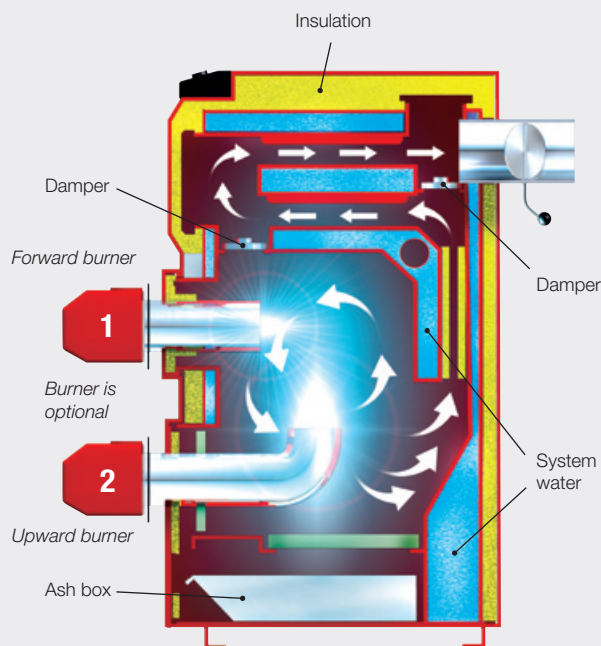
- If there is a high calcium level in the tap water it is recommended that you install a Euronom decalcifier ExoRen on the incoming cold water pipe to avoid calcium deposits on the accumulator tank's heat exchanger.
- For wood burning and if the draught is too high a draught limiter should be installed.

THE BEST HEAT ECONOMY FOR NORMAL HOUSING NEEDS - - ALL DAY, ALL YEAR

With Exonom P20 UB as base and with accumulator tank as complement you utilize the good economy of pellet burning with the possibility to complement with electricity, oil or wood during certain parts of the year.

EXCELLENT TOTAL ECONOMY

Exonom P20 UB is a small but fully developed boiler. Pellet burning 10-20 kW, oil 20 kW, wood 15 kW. The boiler's total capacity is thereby adapted for the best heat economy for normal housing needs.



Cross section through the Exonom P20 UB, which shows that the boiler can be equipped with burner that burns forward (1) or upwards (2) alternatively.

Note! Only one alternative can be chosen.

EXONOM WITH EXOTANK VPS IS FUEL FLEXIBLE

Exonom connected to ExoTank VPS in the FlexiFuel system gives world class flexibility!

The system always chooses the cheapest energy type; wood, pellets, gas, district

heating, oil or electricity.

This fuel flexibility is valuable because the system always chooses the most favourable heating as energy costs and energy policy can change in the future.

EXONOM P20 UB - TECHNICAL DESCRIPTION

DESIGN

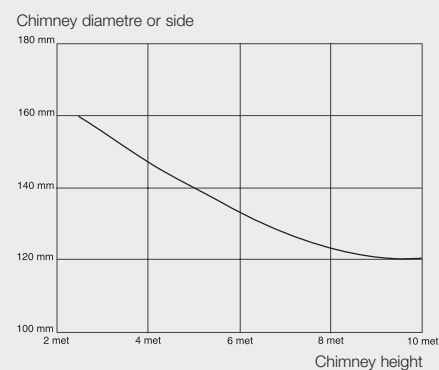
Water mantle of welded construction steel. The convection surfaces are designed to withstand ash from solid fuel without noticeable reduction of the efficiency ratio.

The boiler has two integrated smoke gas dampers so that the smoke gas path can be changed with regard to start combustion or type of fuel.

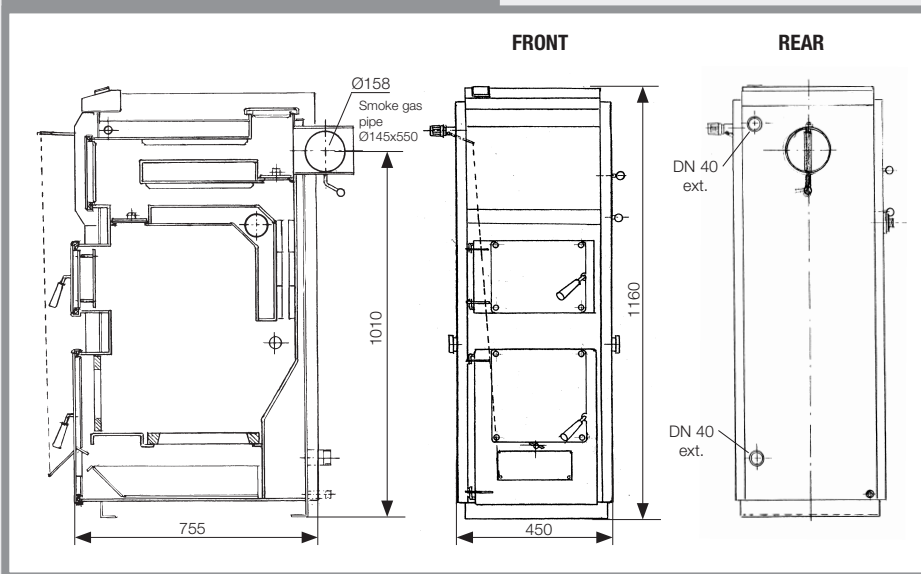
CHIMNEY DIMENSIONS

Minimum dimensions: Brick-built 1/2-brick x 1/2-brick. Steel pipe Ø 125-130 mm and minimum height that gives a minimum draught of 1,5-2,0 mm vp. The minimum height is in most cases 6-7 m. With higher draughts the installation of the Euronom draught limiter is recommended. Always consult the local chimney sweep about chimney solutions.

CHIMNEY RECOMMENDATIONS



EXONOM P20 UB • DIMENSIONS



Exonom P20 UB is also available in mirrored version regarding connections, suspension of doors etc.

EXONOM P20 UB • DELIVERY CONTENT

- Well insulated boiler body of selected pressure vessel steel, doors with soft gaskets and adjustable hinges and locking devices. Both upper and lower doors are equipped with mounting plates for most burners on the market.
- Impact resistant casing of varnished sheet metal.
- Fireproof insulation
- Control panel with thermometers
- Grates of special steel.
- Easy removable turbulator kit
- Large ash space with ash box
- Smoke gas pipe Ø145x500, upwards as standard
- Ash removal kit
- Maintenance and operational instructions
- Draught regulator

OPTIONS

- Accumulator tank - see separate brochure Euronom ExoTank
- Complete pump connection kit
- Automatic shunt
- Burner, pellets or oil
- Draught limiter
- ExoRen decalcifier

TECHNICAL DATA	Max output kW			Volume	Dimensions (mm)			Boiler				Draught requirement, min. vp		Weight (kg)
	Pellets	Oil	Wood		Width	Height	Depth	W x D mm	Volume lit.	Upper door, mm	Lower door, mm	Oil	Wood Pellets	
EXONOM P20 UB	10-20	20	15	60	450	1160	755	290x370	60	290x230	290x390	0,5	1,5-2,0	180

The right to design modifications is reserved



Box 700 SE 391 27 Kalmar SWEDEN
Tel +46 480 221 20 Telefax +46 480 870 17
www.euronom.se info@euronom.se

DISTRIBUTOR: